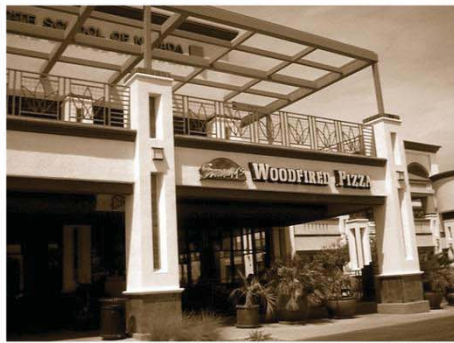
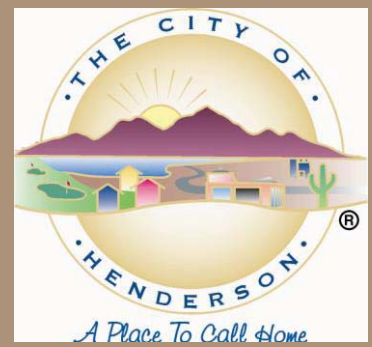


# HENDERSON, NEVADA Development Code



**Adopted  
January 19, 2010**

**Revised 10/18/2011**



# Development Code Chapters

---

|   |              |
|---|--------------|
| <b>CHAPTER 19.1: INTRODUCTORY PROVISIONS .....</b>  | <b>1-1</b>   |
| <b>CHAPTER 19.2: RESIDENTIAL ZONING DISTRICTS .....</b>                                   | <b>2-1</b>   |
| <b>CHAPTER 19.3: NONRESIDENTIAL, MIXED-USE, AND SPECIAL-PURPOSE ZONING DISTRICTS ....</b> | <b>3-1</b>   |
| <b>CHAPTER 19.4: OVERLAYS .....</b>   | <b>4-1</b>   |
| <b>CHAPTER 19.5: USE REGULATIONS .....</b>  | <b>5-1</b>   |
| <b>CHAPTER 19.6: ADMINISTRATION .....</b>   | <b>6-1</b>   |
| <b>CHAPTER 19.7: DEVELOPMENT AND DESIGN STANDARDS.....</b>                                | <b>7-1</b>   |
| <b>CHAPTER 19.8: SIGNS .....</b>  | <b>8-1</b>   |
| <b>CHAPTER 19.9: SUBDIVISION DESIGN AND IMPROVEMENTS.....</b>                             | <b>9-1</b>   |
| <b>CHAPTER 19.10: NONCONFORMITIES.....</b>  | <b>10-1</b>  |
| <b>CHAPTER 19.11: ENFORCEMENT .....</b>   | <b>11-1</b>  |
| <b>CHAPTER 19.12: MEASUREMENT AND DEFINITIONS .....</b>                                   | <b>12-1</b>  |
| <b>INDEX.....</b>   | <b>12-51</b> |



# Table of Contents

---

|   |            |
|---|------------|
| <b>CHAPTER 19.1: INTRODUCTORY PROVISIONS .....</b>                | <b>1-1</b> |
| 19.1.1. Title .....   | 1-1        |
| 19.1.1. Effective Date .....                                      | 1-1        |
| 19.1.2. Authority.....  | 1-1        |
| 19.1.3. Applicability and Jurisdiction.....                       | 1-1        |
| A. Applied to all Lands .....                                     | 1-1        |
| B. Compliance Required .....                                      | 1-1        |
| C. Emergency Powers.....  | 1-1        |
| 19.1.4. Purpose and Intent .....                                  | 1-2        |
| 19.1.5. Conflicting Provisions .....                              | 1-3        |
| A. Conflict with State or Federal Regulations.....                | 1-3        |
| B. Conflict with Other City Regulations.....                      | 1-3        |
| C. Conflict with Private Agreements .....                         | 1-3        |
| 19.1.6. Relationship To The Comprehensive Plan.....               | 1-3        |
| A. Purpose and Role .....   | 1-3        |
| B. Effect .....   | 1-3        |
| 19.1.7. Official Zoning Map .....                                 | 1-4        |
| A. Zoning Map Boundaries.....                                     | 1-4        |
| B. Interpretation of Map Boundaries .....                         | 1-4        |
| 19.1.8. Transitional Provisions.....                              | 1-4        |
| A. Continuity of Provisions .....                                 | 1-4        |
| B. Violations Continue .....                                      | 1-4        |
| C. Legal Nonconformities Under Prior Code.....                    | 1-5        |
| D. Uses, Lots, Structures, and Sites Rendered Nonconforming ..... | 1-5        |
| E. Approved Projects .....  | 1-5        |
| F. Map Interpretations.....                                       | 1-5        |
| G. Transition to New Zoning Districts .....                       | 1-6        |
| 19.1.9. Compliance With District Standards.....                   | 1-7        |
| 19.1.10. Severability .....                                       | 1-7        |

# Table of Contents

---

|   |            |
|---|------------|
| <b>CHAPTER 19.2: RESIDENTIAL ZONING DISTRICTS .....</b>   | <b>2-1</b> |
| 19.2.1. General Purposes and Intent.....  | 2-1        |
| 19.2.2. Chapter Organization.....   | 2-1        |
| 19.2.3. Establishment of Base Residential Zoning Districts .....                                    | 2-1        |
| 19.2.4. Structure of Zoning District Standards.....   | 2-2        |
| 19.2.5. RS-1: Low-Density Single-Family Residential 1 .....   | 2-3        |
| 19.2.6. RS-2: Low-Density Single-Family Residential 2 .....   | 2-4        |
| 19.2.7. RS-4: Low-Density Single-Family Residential 4 .....   | 2-5        |
| 19.2.8. RS-6: Low-Density Single-Family Residential 6 .....   | 2-6        |
| 19.2.9. RS-8: Low-Density Single-Family Residential 8 .....   | 2-7        |
| 19.2.10. RM-10: Medium-Density Residential 10.....  | 2-9        |
| 19.2.11. RM-16: Medium-Density Residential 16.....  | 2-11       |
| 19.2.12. RH-24: High-Density Multifamily Residential 24 .....                                       | 2-12       |
| 19.2.13. RH-36: High-Density Multifamily Residential 36 .....                                       | 2-13       |
| 19.2.14. DRL: Downtown Low-Density Residential.....   | 2-14       |
| 19.2.15. DRM: Downtown Medium-Density Residential.....  | 2-15       |
| 19.2.16. DRH: Downtown High-Density Residential.....  | 2-16       |
| 19.2.17. DP: Downtown Public .....  | 2-17       |
| 19.2.18. RMH: Mobile Home Residential .....   | 2-18       |
| 19.2.19. DH: Development Holding .....  | 2-19       |
| 19.2.20. Summary Dimensional Table for Residential Districts .....                                  | 2-20       |
| <b>CHAPTER 19.3: NONRESIDENTIAL, MIXED-USE, AND SPECIAL-PURPOSE ZONING DISTRICTS ....</b>           | <b>3-1</b> |
| 19.3.1. General Purpose and Intent.....   | 3-1        |
| 19.3.2. Chapter Organization.....   | 3-1        |
| 19.3.3. Establishment of Base Nonresidential, Mixed-Use, and Special-purpose Zoning Districts ..... | 3-1        |
| 19.3.4. Structure of Zoning District Standards.....   | 3-2        |
| 19.3.5. CN: Neighborhood Commercial .....   | 3-3        |
| 19.3.6. CO: Office Commercial.....  | 3-4        |
| 19.3.7. CC: Community Commercial .....  | 3-5        |

# Table of Contents

---

|                                     |   |            |
|-------------------------------------|---|------------|
| 19.3.8.                             | CH: Highway Commercial.....   | 3-6        |
| 19.3.9.                             | CT: Tourist Commercial .....  | 3-7        |
| 19.3.10.                            | CA: Auto-mall Commercial.....   | 3-8        |
| 19.3.11.                            | DCC: Downtown Core Commercial .....   | 3-9        |
| 19.3.12.                            | DHC: Downtown Highway Commercial .....  | 3-10       |
| 19.3.13.                            | IL: Limited Industrial.....   | 3-11       |
| 19.3.14.                            | IG: General Industrial.....   | 3-12       |
| 19.3.15.                            | IP: Industrial Park.....  | 3-13       |
| 19.3.16.                            | MC: Corridor/Community Mixed-Use .....  | 3-14       |
| 19.3.17.                            | MN: Neighborhood Mixed-Use .....  | 3-15       |
| 19.3.18.                            | MR: Regional Mixed-Use .....  | 3-17       |
| 19.3.19.                            | PS: Public and Semipublic.....  | 3-18       |
|                                     | A. Purpose and Intent .....   | 3-18       |
|                                     | B. District Standards.....  | 3-18       |
| 19.3.20.                            | PC: Planned Community .....   | 3-18       |
|                                     | A. Purpose .....  | 3-19       |
|                                     | B. Allowed Uses.....  | 3-19       |
|                                     | C. Additional Use Standards .....   | 3-19       |
|                                     | D. Intensity and Dimensional Standards.....   | 3-20       |
| 19.3.21.                            | Summary Dimensional Table for the Nonresidential, Mixed-Use, and Special-Purpose Districts..... | 3-21       |
| <b>CHAPTER 19.4: OVERLAYS .....</b> |   | <b>4-1</b> |
| 19.4.1.                             | General Purpose and Intent .....  | 4-1        |
| 19.4.2.                             | Establishment of Overlays .....   | 4-1        |
|                                     | A. Overlays Established .....   | 4-1        |
|                                     | B. Relationship with Base Zoning Districts.....   | 4-1        |
| 19.4.3.                             | Airport Environs Overlay (AE).....  | 4-1        |
|                                     | A. Purpose .....  | 4-1        |
|                                     | B. Applicability.....   | 4-2        |
|                                     | C. Zoning Map Designation.....  | 4-2        |

# Table of Contents

---

|         |  |      |
|---------|--|------|
|         | D. Use Standards in AE Overlay .....   | 4-2  |
|         | E. Overlay-Specific Standards .....  | 4-5  |
|         | F. Noise Level Reduction Standards.....  | 4-6  |
|         | G. Notification of Airport Authority .....   | 4-6  |
| 19.4.4. | Master Plan Development Overlay (MP).....  | 4-6  |
|         | A. Purpose .....   | 4-6  |
|         | B. Applicability and Zoning Map Designator.....  | 4-6  |
|         | C. Initiation.....   | 4-6  |
|         | D. Required Plans and Materials .....  | 4-7  |
|         | E. Approval of a Master Development Plan .....   | 4-7  |
|         | F. Land Use Regulations .....  | 4-7  |
|         | G. Development Regulations .....   | 4-7  |
|         | H. Amendments to Adopted Master Development Plan .....   | 4-7  |
|         | I. Development Plan Review .....   | 4-8  |
|         | J. Park Acreage.....   | 4-8  |
| 19.4.5. | Planned Unit Development Overlay (PUD).....  | 4-8  |
|         | A. Purpose .....   | 4-8  |
|         | B. Developer’s Statement of Intent .....   | 4-8  |
|         | C. Review and Approval Procedures .....  | 4-8  |
|         | D. Standards of General Applicability.....   | 4-8  |
| 19.4.6. | Gaming Enterprise Overlay (G).....   | 4-10 |
|         | A. Purpose .....   | 4-10 |
|         | B. Applicability and Zoning Map Designator.....  | 4-10 |
|         | C. Land Use Regulations .....  | 4-11 |
|         | D. Property Development Regulations .....  | 4-11 |
|         | E. Initiation.....   | 4-11 |
|         | F. Required Plans and Materials .....  | 4-11 |
|         | G. Procedure for Approval of Gaming Enterprise Overlay District--Grounds for Denial--Reapplication ..... | 4-12 |
|         | H. Appeals.....  | 4-14 |

# Table of Contents

---

|          |    |   |      |
|----------|----|---|------|
|          | I. | Amendments to Gaming Overlay Plan .....                     | 4-14 |
|          | J. | Expiration, Extension, and Transfer .....                   | 4-14 |
|          | K. | Development Plan Review .....                               | 4-15 |
| 19.4.7.  |    | Redevelopment Overlay (RD) .....                            | 4-15 |
|          | A. | Purpose .....   | 4-15 |
|          | B. | Redevelopment Overlay Boundary .....                        | 4-15 |
|          | C. | Redevelopment Regulations Adopted - Amendments .....        | 4-15 |
|          | D. | Applicability.....  | 4-15 |
|          | E. | Application Review .....                                    | 4-15 |
|          | F. | Required Plans and Materials .....                          | 4-16 |
| 19.4.8.  |    | Hillside Overlay (H) .....                                  | 4-16 |
|          | A. | Purpose .....   | 4-16 |
|          | B. | Applicability and Zoning Map Designator.....                | 4-16 |
|          | C. | Hillside Development Plan Required .....                    | 4-17 |
|          | D. | Hillside Development Plan Requirements.....                 | 4-17 |
|          | E. | Site Meeting Required .....                                 | 4-18 |
|          | F. | Development Regulations .....                               | 4-18 |
| 19.4.9.  |    | Sensitive Lands Overlay (SL).....                           | 4-35 |
|          | A. | Purpose .....   | 4-35 |
|          | B. | Conflicting Provisions .....                                | 4-35 |
|          | C. | Applicability and Zoning Map Designator.....                | 4-35 |
|          | D. | Designation of Sensitive Lands Overlay .....                | 4-36 |
|          | E. | Establishment of Review Standards, Uses, and Densities..... | 4-36 |
|          | F. | Development Review Procedures.....                          | 4-37 |
| 19.4.10. |    | Rural Neighborhood Overlay (RN).....                        | 4-37 |
|          | A. | Purpose .....   | 4-37 |
|          | B. | Applicability and Zoning Map Designator.....                | 4-37 |
|          | C. | Amendment.....  | 4-38 |
|          | D. | Underlying Zoning Districts.....                            | 4-38 |
|          | E. | Overlay-Specific Standards .....                            | 4-38 |

# Table of Contents

---

|  |  |      |
|--|--|------|
| F.   | Exceptions.....  | 4-39 |
| <b>CHAPTER 19.5: USE REGULATIONS .....</b> | <b>5-1</b>   |      |
| 19.5.1.                                    | Chapter Organization.....                                    | 5-1  |
| A.   | Use Classification .....                                     | 5-1  |
| B.   | Use Regulations .....  | 5-1  |
| C.   | Accessory Uses and Structures .....                          | 5-2  |
| D.   | Temporary Uses and Structures.....                           | 5-2  |
| 19.5.2.                                    | Use Classification.....                                      | 5-2  |
| A.   | Use Classifications.....                                     | 5-2  |
| B.   | Developments with Multiple Principal Uses .....              | 5-2  |
| C.   | Unlisted Uses .....  | 5-3  |
| 19.5.3.                                    | Residential Uses .....                                       | 5-4  |
| A.   | General STANDARDS FOR ALL RESIDENTIAL USES .....             | 5-4  |
| B.   | Household Living.....  | 5-4  |
| C.   | Facility For Transitional Living For Released Offenders..... | 5-13 |
| D.   | Halfway House For Recovering Alcohol and Drug Abusers .....  | 5-15 |
| E.   | Home For Individual Residential Care.....                    | 5-17 |
| F.   | Mobile Home Park or Subdivision.....                         | 5-19 |
| G.   | Residential Facility for Groups.....                         | 5-20 |
| H.   | Travel TRAILER/RV PARK.....                                  | 5-23 |
| I.   | Short-Term Vacation Rental .....                             | 5-23 |
| 19.5.4.                                    | Public/Institutional Uses.....                               | 5-24 |
| A.   | Airport or Landing Strip.....                                | 5-24 |
| B.   | Cemetery .....   | 5-25 |
| C.   | Club or Lodge.....   | 5-25 |
| D.   | Cultural Institution .....                                   | 5-26 |
| E.   | Day Care Facility .....                                      | 5-27 |
| F.   | DETENTION FACILITY .....                                     | 5-30 |
| G.   | Emergency Health Care Facility.....                          | 5-30 |
| H.   | EMPLOYMENT & TRAINING CENTER, NON-PROFIT.....                | 5-31 |

# Table of Contents

---

|         |  |      |
|---------|--|------|
| I.      | Government Office.....   | 5-31 |
| J.      | Heliport .....   | 5-32 |
| K.      | Hospital.....  | 5-32 |
| L.      | Institutional Housing.....   | 5-33 |
| M.      | Park and Recreation Facility.....                                      | 5-36 |
| N.      | PUBLIC SAFETY FACILITY .....   | 5-37 |
| O.      | Religious Assembly.....  | 5-37 |
| P.      | School, Public or Private .....  | 5-38 |
| Q.      | School, Business, Trade, or Vocational .....                           | 5-39 |
| R.      | UTILITY: MINOR .....   | 5-40 |
| S.      | Utility: Major .....   | 5-40 |
| T.      | Wireless Communication Facility.....                                   | 5-41 |
| U.      | Youth Drop-In Center.....  | 5-53 |
| 19.5.5. | Commercial Uses.....   | 5-55 |
| A.      | General Standards For Alcohol and Liquor Uses and Live Entertainment.. | 5-55 |
| B.      | Agriculture: Crop Production.....                                      | 5-57 |
| C.      | Ambulance Service.....   | 5-57 |
| D.      | Animals and Related Services.....                                      | 5-58 |
| E.      | Arts and Crafts: Artists' Studio.....                                  | 5-68 |
| F.      | Bail-bond Broker .....   | 5-69 |
| G.      | Banquet Facility .....   | 5-69 |
| H.      | Brew Pub/Microbrewery .....  | 5-70 |
| I.      | Brewery.....   | 5-71 |
| J.      | Building Materials and Service.....                                    | 5-72 |
| K.      | Catering Service.....  | 5-73 |
| L.      | Commercial Recreation and Entertainment.....                           | 5-74 |
| M.      | Convention.....  | 5-79 |
| N.      | Daily Labor Service .....  | 5-79 |
| O.      | Eating and Drinking Establishment .....                                | 5-80 |
| P.      | Financial Institution .....  | 5-90 |

# Table of Contents

---

|         |  |       |
|---------|--|-------|
| Q.      | Food and Beverage Sales.....                   | 5-94  |
| R.      | Funeral and Interment Service .....            | 5-95  |
| S.      | Gaming Establishment .....                     | 5-95  |
| T.      | Golf Course or Driving Range .....             | 5-97  |
| U.      | Hookah Lounge.....                             | 5-98  |
| V.      | Horticulture .....                             | 5-99  |
| W.      | Laboratory .....                               | 5-100 |
| X.      | Maintenance and Repair Service.....            | 5-100 |
| Y.      | Mini-Storage Facility .....                    | 5-101 |
| Z.      | Office .....                                   | 5-104 |
| AA.     | Pawnshop.....                                  | 5-106 |
| BB.     | Personal Improvement Service.....              | 5-108 |
| CC.     | Personal Service .....                         | 5-109 |
| DD.     | Plant Nursery .....                            | 5-117 |
| EE.     | Recreational Vehicle Resort.....               | 5-118 |
| FF.     | Retail Sales and Service .....                 | 5-118 |
| GG.     | Sexually Oriented Business .....               | 5-128 |
| HH.     | Vehicle/Equipment Sales and Service.....       | 5-130 |
| II.     | Visitor Accommodation.....                     | 5-145 |
| JJ.     | Wedding Chapel .....                           | 5-149 |
| 19.5.6. | Industrial Uses .....                          | 5-149 |
| A.      | General Standards for All Industrial Uses..... | 5-149 |
| B.      | Cogeneration Facility .....                    | 5-150 |
| C.      | Commercial Laundry .....                       | 5-151 |
| D.      | COMMUNICATION FACILITIES.....                  | 5-152 |
| E.      | Concrete Product Production.....               | 5-152 |
| F.      | Construction Storage Yard .....                | 5-153 |
| G.      | Industry.....                                  | 5-153 |
| H.      | Junkyard .....                                 | 5-157 |
| I.      | Maintenance and Service Facility .....         | 5-157 |

# Table of Contents

---

|  |   |            |
|--|---|------------|
|  | J. Mining and Processing.....                                   | 5-158      |
|  | K. Recycling.....   | 5-159      |
|  | L. Warehousing and/or Storage Yard.....                         | 5-162      |
|  | M. Wholesaling, Distribution, and Storage.....                  | 5-164      |
| 19.5.7.                                  | Accessory Uses and Structures.....                              | 5-166      |
|  | A. Purpose.....   | 5-166      |
|  | B. Approval Procedure.....                                      | 5-166      |
|  | C. General Standards for All Accessory Uses and Structures..... | 5-167      |
|  | D. Standards for Specific Accessory Uses and Structures.....    | 5-170      |
| 19.5.8.                                  | Temporary Uses and Structures.....                              | 5-181      |
|  | A. Purpose.....   | 5-181      |
|  | B. Approval Procedure.....                                      | 5-181      |
|  | C. General Standards for All Temporary Uses and Structures..... | 5-181      |
|  | D. Standards for Specific Temporary Uses and Structures.....    | 5-182      |
| <b>CHAPTER 19.6: ADMINISTRATION.....</b> |   | <b>6-1</b> |
| 19.6.1.                                  | Purpose and Organization of Chapter.....                        | 6-1        |
| 19.6.2.                                  | Review and Decision-Making Bodies.....                          | 6-1        |
|  | A. Summary Table.....   | 6-1        |
|  | B. Planning Commission.....                                     | 6-3        |
|  | C. City Staff.....  | 6-4        |
| 19.6.3.                                  | Common Review Procedures.....                                   | 6-4        |
|  | A. Preliminary Application Procedures.....                      | 6-4        |
|  | B. Application Review Process.....                              | 6-9        |
|  | C. Review and Decision.....                                     | 6-16       |
|  | D. Structure of Individual Procedure Sections.....              | 6-17       |
| 19.6.4.                                  | Comprehensive Plan and Zoning Applications.....                 | 6-17       |
|  | A. Comprehensive Plan Amendments.....                           | 6-17       |
|  | B. Development Code Text Amendments.....                        | 6-22       |
|  | C. Rezonings.....   | 6-24       |
|  | D. Rezonings to MP or PUD Overlay.....                          | 6-27       |

# Table of Contents

---

|         |   |      |
|---------|---|------|
| 19.6.5. | Land Division Applications .....                          | 6-30 |
|         | A. Parcel Maps .....                                      | 6-30 |
|         | B. Boundary Line Adjustments.....                         | 6-31 |
|         | C. Large Parcel Divisions .....                           | 6-33 |
|         | D. Tentative Maps.....                                    | 6-33 |
|         | E. Final Maps.....  | 6-35 |
|         | F. Reversions to Acreage.....                             | 6-37 |
| 19.6.6. | Entitlements .....  | 6-38 |
|         | A. Conditional Use Permits .....                          | 6-38 |
|         | B. Design Review.....                                     | 6-43 |
|         | C. Redevelopment Area Review .....                        | 6-46 |
|         | D. Temporary Use Permits.....                             | 6-47 |
| 19.6.7. | Master Sign Plans.....                                    | 6-50 |
|         | A. Applicability.....                                     | 6-50 |
|         | B. Application Filing.....                                | 6-50 |
|         | C. Contents of Master Sign Plans .....                    | 6-50 |
|         | D. Design.....  | 6-50 |
|         | E. Sign Structure .....                                   | 6-50 |
|         | F. Community Development Director Review and Action ..... | 6-50 |
|         | G. Master Sign Plan Approval Criteria.....                | 6-51 |
|         | H. Appeals.....   | 6-51 |
|         | I. Amendments and Changes .....                           | 6-51 |
| 19.6.8. | Vacations .....   | 6-52 |
|         | A. Type I Vacations.....                                  | 6-52 |
|         | B. Type II (Municipal Utility Easement) Vacations.....    | 6-53 |
| 19.6.9. | Modifications and Appeals .....                           | 6-54 |
|         | A. Summary Table.....                                     | 6-54 |
|         | B. Administrative Adjustments.....                        | 6-55 |
|         | C. Variances .....  | 6-57 |
|         | D. Waivers .....  | 6-61 |

# Table of Contents

---

|  |   |            |
|--|---|------------|
|  | E. Appeals.....   | 6-62       |
|  | F. Interpretations.....   | 6-65       |
| 19.6.10.   | Other Procedures .....  | 6-66       |
|  | A. Development Agreements.....                                    | 6-66       |
|  | B. Creation of Landscape Maintenance Districts.....               | 6-68       |
| <b>CHAPTER 19.7: DEVELOPMENT AND DESIGN STANDARDS.....</b> |   | <b>7-1</b> |
| 19.7.1.  | General Provisions .....  | 7-1        |
|  | A. General Intent.....  | 7-1        |
|  | B. Applicability.....   | 7-1        |
| 19.7.2.  | Common Open Space.....  | 7-2        |
|  | A. Purpose .....  | 7-2        |
|  | B. Applicability.....   | 7-2        |
|  | C. Standards .....  | 7-2        |
| 19.7.3.  | Circulation and Mobility.....                                     | 7-7        |
|  | A. Purpose .....  | 7-7        |
|  | B. Applicability.....   | 7-7        |
|  | C. Circulation Plan required.....                                 | 7-7        |
|  | D. Street Connectivity .....                                      | 7-8        |
|  | A. Cross-Access Between Adjacent Uses.....                        | 7-11       |
|  | B. Pedestrian Circulation .....                                   | 7-12       |
| 19.7.4.  | Parking and Loading .....   | 7-14       |
|  | A. Purpose .....  | 7-14       |
|  | B. Applicability.....   | 7-14       |
|  | C. Off-Street Parking Schedules .....                             | 7-15       |
|  | D. Off-Street Loading .....                                       | 7-16       |
|  | E. Calculations .....   | 7-17       |
|  | F. Off-Street Parking Alternatives .....                          | 7-18       |
|  | G. Use of Off-Street Parking Areas .....                          | 7-30       |
|  | H. Vehicle Stacking Areas .....                                   | 7-31       |
|  | I. Accessible Parking For Persons With Physical Disabilities..... | 7-32       |

# Table of Contents

---

|         |  |       |
|---------|--|-------|
|         | J. Parking Location And Layout .....                           | 7-33  |
|         | K. Dimensions and Design.....                                  | 7-36  |
| 19.7.5. | Landscaping and Screening .....                                | 7-42  |
|         | A. Purpose .....   | 7-42  |
|         | B. Site Landscaping .....                                      | 7-43  |
|         | C. Perimeter Landscape Buffers.....                            | 7-43  |
|         | D. Parking Lot Landscaping and Screening.....                  | 7-45  |
|         | E. Plant Units.....  | 7-47  |
|         | F. Landscape Material Standards.....                           | 7-48  |
|         | G. Installation, Maintenance, and Irrigation .....             | 7-52  |
|         | H. Mechanical Equipment Screening .....                        | 7-53  |
|         | I. Dumpster Screening .....                                    | 7-54  |
|         | J. Loading and Access Areas-Design and Screening.....          | 7-54  |
|         | K. Fences and Walls.....                                       | 7-55  |
|         | L. Slopes and Grading .....                                    | 7-57  |
| 19.7.6. | Building Design Standards.....                                 | 7-58  |
|         | A. General Provisions .....                                    | 7-58  |
|         | B. Single-Family Residential Design Standards.....             | 7-60  |
|         | C. Multifamily Residential Design Standards.....               | 7-68  |
|         | D. Commercial, Mixed-Use, and Industrial Design Standards..... | 7-73  |
|         | E. Infill Design Standards .....                               | 7-87  |
|         | F. Condominium Conversions.....                                | 7-88  |
| 19.7.7. | District-Specific Standards.....                               | 7-95  |
|         | A. Applicability.....  | 7-95  |
|         | B. DRH: Downtown High-Density Residential .....                | 7-95  |
|         | C. DP: Downtown Public .....                                   | 7-95  |
|         | D. DCC: Downtown Core Commercial .....                         | 7-95  |
|         | E. DHC: Downtown Highway Commercial .....                      | 7-100 |
|         | F. CA: Auto-Mall Commercial.....                               | 7-101 |
|         | G. Mixed-Use Districts .....                                   | 7-103 |

# Table of Contents

---

|          |   |       |
|----------|---|-------|
| 19.7.8.  | Operational Performance.....                            | 7-109 |
| A.       | Air Quality.....  | 7-109 |
| B.       | Combustibles and Explosives .....                       | 7-109 |
| C.       | Gases .....   | 7-109 |
| D.       | Hazardous Materials Storage .....                       | 7-109 |
| E.       | Glare and Lighting .....                                | 7-110 |
| F.       | Heat and Humidity.....                                  | 7-114 |
| G.       | Noise.....  | 7-114 |
| H.       | Odors .....   | 7-117 |
| I.       | Radioactive Materials .....                             | 7-117 |
| J.       | Vibration .....   | 7-117 |
| K.       | Evidence of Compliance.....                             | 7-117 |
| 19.7.9.  | Multiple Species Habitat Conservation .....             | 7-117 |
| A.       | Purpose .....   | 7-117 |
| B.       | Imposition of Mitigation Fee.....                       | 7-117 |
| C.       | Exemptions and Exceptions .....                         | 7-118 |
| D.       | Land Disturbance Report .....                           | 7-118 |
| E.       | Compliance Report Fees.....                             | 7-119 |
| F.       | Fee Administration .....                                | 7-119 |
| G.       | Incidental Take Permit.....                             | 7-119 |
| 19.7.10. | Residential Construction tax .....                      | 7-120 |
| A.       | Imposition of Rate of Residential Construction Tax..... | 7-120 |
| B.       | Collection of Residential Construction Tax.....         | 7-120 |
| C.       | Residential Construction Tax Fund.....                  | 7-120 |
| D.       | Park District Boundaries .....                          | 7-120 |
| E.       | Refund of Fee .....                                     | 7-120 |
| F.       | Partial Credit .....                                    | 7-120 |
| G.       | Posting Bond for Park Improvements.....                 | 7-121 |
| H.       | Review by Henderson Parks and Recreation Board.....     | 7-121 |
| I.       | Taxes in Addition to Other Real Estate Taxes.....       | 7-121 |

# Table of Contents

---

|          |   |            |
|----------|---|------------|
|          | J. Report to City Council by Parks and Recreation Director .....  | 7-121      |
| 19.7.11. | Compensating Public Benefits .....  | 7-122      |
|          | A. Purpose .....  | 7-122      |
|          | B. Incentives Restricted to Added Benefits .....  | 7-122      |
|          | C. Allowable Benefits for Which Incentives May be Granted .....   | 7-122      |
|          | D. Incentives Permitted .....   | 7-122      |
|          | E. Procedure and Criteria for Approval .....  | 7-122      |
| 19.7.12. | Sustainability .....  | 7-123      |
|          | A. Purpose .....  | 7-123      |
|          | B. Applicability.....   | 7-123      |
|          | C. Menu of Site and Building Design Options for Sustainability.....   | 7-125      |
| 19.7.13. | Airspace Compatibility Requirements .....   | 7-132      |
|          | A. Height Limits .....  | 7-132      |
|          | Except as otherwise provided, no structure shall be permitted to be erected, altered or maintained within the City of Henderson that (a) would constitute a hazard to air navigation, or (b) would result in an increase to minimum flight altitudes during any phase of flight, or (c) would otherwise be determined to pose a significant adverse impact on airport or aircraft operations. However, nothing in this section shall be construed as prohibiting the construction, alteration or maintenance of any structure to a height up to 35 feet above the surface of the land or in any zone created by this Code which has received all necessary airspace approvals as required by the City of Henderson..... | 7-132      |
|          | B. Notices of Construction or Alteration.....   | 7-132      |
|          | <b>CHAPTER 19.8: SIGNS .....</b>  | <b>8-1</b> |
| 19.8.1.  | Purpose.....  | 8-1        |
|          | A. General.....   | 8-1        |
|          | B. Specific.....  | 8-1        |
| 19.8.2.  | Applicability .....   | 8-1        |
| 19.8.3.  | General Sign Regulations .....  | 8-1        |
|          | A. Property Owner’s Responsibility .....  | 8-1        |
|          | B. Noncommercial Messages .....   | 8-1        |
|          | C. Maintenance Required .....   | 8-2        |

# Table of Contents

---

|         |  |     |
|---------|--|-----|
|         | D. The American Flag .....   | 8-2 |
|         | E. Sight Visibility Zone .....   | 8-3 |
| 19.8.4. | Prohibited Signs, Sign Locations, and Sign Characteristics.....  | 8-3 |
|         | A. Abandoned signs.....  | 8-3 |
|         | B. Banners, pennants, inflatable signs, tethered balloons, searchlights, and similar attention-getting devices, unless otherwise approved in Section 19.8.9.B.2.....   | 8-3 |
|         | C. Signs that obstruct, impair, obscure, interfere with the view of or imitate, resemble or may be confused with any official emergency vehicle, traffic control sign, signal, or device.....  | 8-3 |
|         | D. Signs attached to trees, telephone poles, public benches or streetlights, or placed on any public property or public right-of-way without governmental approval.....  | 8-3 |
|         | E. Vehicle signs and portable signs.....   | 8-3 |
|         | F. Except within the DCC and DP districts not fronting Lake Mead Parkway, roof-mounted signs and signs projecting above a parapet. ....  | 8-4 |
|         | G. Weekend directional signs.....  | 8-4 |
|         | H. Back-lit awning signs. ....   | 8-4 |
|         | I. Signs, other than allowed temporary signs, made of plywood, pressed board, or other non-exterior grade wood products. ....  | 8-4 |
|         | J. Painted-on wall signs, except;.....   | 8-4 |
|         | K. Other signs not expressly allowed under this chapter.....   | 8-4 |
| 19.8.5. | Exempt Signs.....  | 8-4 |
|         | A. Official notices of any court, public body, or officer.....   | 8-4 |
|         | B. Notices posted by a utility or other quasi-public agent in the performance of a public duty or by any person giving due legal notice.....   | 8-4 |
|         | C. Warning or security signs that are no more than four square feet in area..  | 8-4 |
|         | D. In-park advertising panels on playing field walls, backboards, and scoreboards erected by a public agency or other organization authorized to do so by the City Council.....  | 8-4 |
|         | E. Brass, marble, or similar plaques containing names of buildings, dates of erection, monumental citations, commemorative information, and similar features when such plaques or monuments are cut into a masonry surface or inlaid so as to be part of a building or provided they are constructed of bronze or similar non-combustible material and not more than four square feet in area..... | 8-4 |

# Table of Contents

---

|         |   |     |
|---------|---|-----|
| F.      | Signs manufactured as a standard, integral part of a mass-produced product accessory to a commercial, public, or semipublic use, including vending machines, automated teller machines, and gasoline pumps.....   | 8-4 |
| G.      | Holiday lights and displays containing no commercial message, erected no sooner than 45 days before the holiday and removed within 14 days following the holiday.....   | 8-4 |
| H.      | Non-illuminated wall signs one square foot in area or smaller, displaying the name and profession of the occupant of the premises. ....   | 8-4 |
| I.      | Onsite real estate signs offering a parcel “for sale” or “for lease,” not exceeding 32 square feet each, and provided that the maximum number of signs per site may not exceed one sign per 250 linear feet of frontage along a public right-of-way.....  | 8-5 |
| J.      | Site entrance signs that direct and inform patrons and visitors to the subject site, not exceeding one sign per entrance and not exceeding eight square feet in area or 32 inches in height.....  | 8-5 |
| K.      | Window displays covering less than 25 percent of each window in a nonresidential zoning district.....   | 8-5 |
| L.      | Any sign inside a building that is not visible or legible from a distance of more than three feet beyond the subject site’s boundaries. ....  | 8-5 |
| M.      | Non-commercial messages unless otherwise expressly regulated by this chapter.....   | 8-5 |
| N.      | Any public safety sign, notice, or warning required by a valid and applicable federal, state, or local law, regulation, or ordinance. ....  | 8-5 |
| O.      | Emblems or insignia of any nation or political subdivision. ....  | 8-5 |
| P.      | Religious symbols.....  | 8-5 |
| Q.      | Works of art or decorative architectural graphics that do not include a commercial message and are not symbolic of any commercial business or commercial activity taking place on the subject premises. ....  | 8-5 |
| R.      | A single flag of the United States of America or the State of Nevada, or both, each not exceeding 100 square feet in area or 40 feet in height and in accordance with Section 19.8.3.D. (Note: a permit must be obtained and appropriate inspections performed as required by the Director of Building and Fire Safety for the flagpole). Flag poles that exceed zoning district height limits are subject to Section 19.12.3.C. .... | 8-5 |
| S.      | Other signs that are expressly exempted from sign permit requirements in accordance with the regulations of this chapter.....   | 8-5 |
| 19.8.6. | Signs In Residential, Public, and Semipublic Zoning Districts .....   | 8-5 |
| A.      | Applicability.....  | 8-5 |

# Table of Contents

---

|         |   |      |
|---------|---|------|
|         | B. General.....   | 8-5  |
|         | C. Subdivision (or Neighborhood) Identification Signs.....              | 8-6  |
|         | D. Master Development Signs.....  | 8-6  |
|         | E. Nonresidential Uses .....  | 8-6  |
| 19.8.7. | Signs In Commercial, Mixed-Use, Downtown, And Industrial Districts..... | 8-7  |
|         | A. Applicability.....   | 8-7  |
|         | B. Wall Signs .....   | 8-7  |
|         | C. Freestanding Signs.....  | 8-9  |
|         | D. Projecting Signs .....   | 8-13 |
|         | E. Awning and Canopy Signs .....  | 8-13 |
|         | F. Menu Board Signs .....   | 8-13 |
|         | G. A-Frame and Easel Signs.....   | 8-14 |
|         | H. Changing-Image Signs .....   | 8-14 |
|         | I. Electronic Message Centers.....                                      | 8-15 |
|         | J. Electronic Graphic Display Signs.....                                | 8-16 |
|         | K. Digital Video Display Signs .....                                    | 8-17 |
|         | L. Murals.....  | 8-18 |
|         | M. Window Signs.....  | 8-19 |
| 19.8.8. | Sign Illumination and Design .....                                      | 8-19 |
|         | A. Illumination.....  | 8-19 |
|         | B. Design.....  | 8-19 |
| 19.8.9. | Temporary Signs.....  | 8-20 |
|         | A. General.....   | 8-20 |
|         | B. Temporary Business Signs .....                                       | 8-20 |
|         | C. Temporary Real Estate Signs .....                                    | 8-21 |
|         | D. Signs for Land Sales or Leases.....                                  | 8-22 |
|         | E. Signs for Existing Improved Property.....                            | 8-22 |
|         | F. Off-PremiseS Open House Signs .....                                  | 8-23 |
|         | G. Off-PremiseS Kiosk Signs .....                                       | 8-24 |
|         | H. Off-Premises Development Directional Signs .....                     | 8-26 |

# Table of Contents

---

|   |    |   |            |
|---|----|---|------------|
|   | I. | Temporary Off-Premises Election Signs.....              | 8-29       |
|   | J. | Temporary Off-Premises Special Event Signs .....        | 8-29       |
| 19.8.10.  |    | Off-Premises Signs.....                                 | 8-30       |
|   | A. | Billboards.....   | 8-30       |
|   | B. | Other Off-Premises Signs .....                          | 8-33       |
| 19.8.11.  |    | Administration And Enforcement.....                     | 8-33       |
|   | A. | Permit Required.....                                    | 8-33       |
|   | B. | Business License Issuance/Renewal .....                 | 8-33       |
|   | C. | Sign Alterations .....                                  | 8-33       |
|   | D. | Abandoned Signs.....                                    | 8-34       |
|   | E. | Prohibited, Illegal, Unsafe, and Dilapidated Signs..... | 8-35       |
|   | F. | Removal Proceedings .....                               | 8-35       |
|   | G. | Other Signs.....  | 8-36       |
|   | H. | Exceptions and Waivers.....                             | 8-37       |
| 19.8.12.  |    | Measurements and Interpretations.....                   | 8-37       |
|   | A. | Sign Area.....  | 8-37       |
|   | B. | Frontage .....  | 8-38       |
|   | C. | Window Area.....  | 8-39       |
|   | D. | Sign Height.....  | 8-39       |
|   | E. | Sign Clearance .....                                    | 8-40       |
|   | F. | Sign Base .....   | 8-40       |
|   | G. | Determination of “Visibility” or “Legibility” .....     | 8-40       |
| <b>CHAPTER 19.9: SUBDIVISION DESIGN AND IMPROVEMENTS.....</b> |    |   | <b>9-1</b> |
| 19.9.1.   |    | General.....  | 9-1        |
|   | A. | Applicability.....                                      | 9-1        |
|   | B. | Exemptions.....   | 9-1        |
|   | C. | Improvement Plans .....                                 | 9-1        |
|   | D. | Standard Drawings and Standard Specifications .....     | 9-2        |
| 19.9.2.   |    | Required Dedications and Improvements .....             | 9-2        |
|   | A. | Dedications.....  | 9-2        |

# Table of Contents

---

|         |    |  |     |
|---------|----|--|-----|
|         | B. | Installation of Public Facilities and Improvements .....   | 9-2 |
|         | C. | Performance Guarantees .....   | 9-3 |
|         | D. | Maintenance Guarantees .....   | 9-4 |
|         | E. | Inspection of Improvements .....   | 9-4 |
| 19.9.3. |    | Resource Preservation.....   | 9-5 |
| 19.9.4. |    | Lots .....   | 9-5 |
|         | A. | Dimensions and Configuration .....   | 9-5 |
|         | B. | Setbacks.....  | 9-5 |
| 19.9.5. |    | Access .....   | 9-6 |
|         | A. | The City may require, as a condition of approval of a tentative map, that dedications or offers of dedication of streets include a waiver of direct access rights from any lot within the subdivision to any such street within or abutting the subdivision. Upon acceptance of the dedication, such waiver must be reflected in an appropriate title document, which must be recorded and become effective in accordance with its provisions..... | 9-6 |
|         | B. | Lots abutting a primary or secondary arterial or highway (as designated on the approved Master Streets and Highways Plan) may be denied vehicular access to such street.....   | 9-6 |
|         | C. | Vehicular access to lots denied direct access from a primary or secondary arterial or highway (as designated on the approved Master Streets and Highways Plan) must be by minor street or alley. ....  | 9-6 |
|         | D. | The paving materials, widths, and locations of driveways must conform to the Standard Drawings. In residential districts, all driveways must be at least 6 feet from the point of curvature of any intersection, per Standard Drawing Nos. 222 and 222A, unless this requirement is waived by the Public Works Director. ....  | 9-6 |
|         | E. | Parcels classified in the RN overlay with access solely via a roadway listed on the adopted Master Streets and Highways Plan must have a circular driveway, cul-de-sac, or any other acceptable design that eliminates backing into the roadway for egress. Parcels with dual frontage must use the frontage adjacent to the roadway that is not listed on the Master Streets and Highways Plan. ....  | 9-6 |
| 19.9.6. |    | Drainage.....  | 9-6 |
|         | A. | Drainage System.....   | 9-6 |
|         | B. | Valley Gutters and Under-Drains.....   | 9-6 |
|         | C. | Drainage Channel Design.....   | 9-7 |
|         | D. | Drainage Pipe .....  | 9-7 |

# Table of Contents

---

|          |  |      |
|----------|--|------|
| 19.9.7.  | Streets.....   | 9-7  |
|          | A. Alignment.....  | 9-7  |
|          | B. Street and Right-of-Way Widths.....   | 9-7  |
|          | C. Street Jogs.....  | 9-10 |
|          | D. Reverse or Compound Curves.....   | 9-10 |
|          | E. Cul-De-Sacs.....  | 9-10 |
|          | F. Block Length.....   | 9-10 |
|          | G. Intersections.....  | 9-10 |
|          | H. Curb and Gutter.....  | 9-10 |
|          | I. Alleys.....   | 9-11 |
|          | J. Street Names.....   | 9-11 |
|          | K. Access Streets.....   | 9-11 |
|          | L. Gates and Restrictions on Access to Streets, Driveways, or Alleys.....  | 9-11 |
| 19.9.8.  | Sidewalks.....   | 9-12 |
|          | A. Where Required.....   | 9-12 |
|          | B. Where Not Required.....   | 9-13 |
|          | C. Width.....  | 9-13 |
|          | D. Location.....   | 9-13 |
|          | E. Construction.....   | 9-13 |
|          | F. Pedestrian Connections Between Developments.....  | 9-14 |
| 19.9.9.  | Street Lights.....   | 9-14 |
|          | A. The electricity supply must be adequate for domestic use and street lighting.....   | 9-14 |
|          | B. The subdivider must furnish a statement from the electric supply company certifying that the company will furnish necessary electricity.....                    | 9-14 |
|          | C. Street lights must be located and installed in conformance with the Standard Specifications and Standard Drawings.....  | 9-14 |
|          | D. Street lights must conform to recommended practices for street and highway lighting as established by the Illuminating Engineers' Society of North America..... | 9-14 |
|          | E. The cost of making the connections to existing street lighting circuits is the responsibility of the sub-divider.....   | 9-14 |
| 19.9.10. | Water Supply and Fire Hydrants.....  | 9-14 |

# Table of Contents

---

|          |   |             |
|----------|---|-------------|
|          | A. Water lines to fire hydrants must comply with the Standard Specifications and Standard Drawings. ....  | 9-14        |
|          | B. The following information must be provided for subdivisions to be supplied by a source of water other than the City of Henderson or the Las Vegas Valley Water District: ..... | 9-14        |
| 19.9.11. | Easements.....  | 9-14        |
|          | A. Utility Easements.....   | 9-14        |
|          | B. Emergency Access Easements.....  | 9-15        |
|          | C. Cross-Access Easements.....  | 9-15        |
| 19.9.12. | Monuments .....   | 9-15        |
|          | A. General.....   | 9-15        |
|          | B. Monument Types.....  | 9-15        |
|          | C. Determination of Monument Location .....   | 9-16        |
|          | D. Alternate Monument Types.....  | 9-16        |
|          | E. Construction .....   | 9-16        |
|          | F. Survey Requirements .....  | 9-16        |
|          | G. Subdivision Lots.....  | 9-17        |
| 19.9.13. | Reservations For Parks and School Sites.....  | 9-17        |
|          | A. Parks and Recreation Sites.....  | 9-17        |
|          | B. School Sites.....  | 9-18        |
| 19.9.14. | Street Naming and Addressing .....  | 9-19        |
|          | A. Street Naming.....   | 9-19        |
|          | B. Addressing.....  | 9-21        |
| 19.9.15. | Building Addressing .....   | 9-24        |
|          | A. Color, Style, and Height Specifications.....   | 9-24        |
|          | B. Location .....   | 9-25        |
|          | <b>CHAPTER 19.10: NONCONFORMITIES.....</b>  | <b>10-1</b> |
| 19.10.1. | General.....  | 10-1        |
|          | A. Introduction.....  | 10-1        |
|          | B. Applicability.....   | 10-1        |
|          | C. Continuation Permitted.....  | 10-1        |

# Table of Contents

---

|   |  |      |
|---|--|------|
|   | D. Determination of Nonconformity Status .....               | 10-1 |
|   | E. Repairs and Maintenance.....                              | 10-1 |
|   | F. Tenancy and Ownership .....                               | 10-1 |
| 19.10.2.                                | Nonconforming Uses.....                                      | 10-1 |
|   | A. Expansion.....  | 10-1 |
|   | B. Change of Use .....                                       | 10-2 |
|   | C. Compliance with Performance Standards Required.....       | 10-2 |
|   | D. Loss of Legal Nonconformity Status .....                  | 10-2 |
| 19.10.3.                                | Nonconforming Lots.....                                      | 10-2 |
|   | A. Residential Lots .....                                    | 10-2 |
|   | B. Nonresidential Districts.....                             | 10-3 |
| 19.10.4.                                | Nonconforming Structures .....                               | 10-3 |
|   | A. Use .....   | 10-3 |
|   | B. Expansion.....  | 10-3 |
|   | C. Moving .....  | 10-3 |
|   | D. Loss of Nonconforming Status; Damage or Destruction ..... | 10-3 |
| 19.10.5.                                | Nonconforming Signs .....                                    | 10-4 |
|   | A. Determination of Nonconforming Status .....               | 10-4 |
|   | B. Ownership .....   | 10-4 |
|   | C. Maintenance and Repair .....                              | 10-4 |
|   | D. Loss of Nonconforming Status .....                        | 10-4 |
|   | E. Alterations .....   | 10-5 |
| 19.10.6.                                | Nonconforming Site Features .....                            | 10-5 |
|   | A. Purpose .....   | 10-5 |
|   | B. Applicability.....  | 10-5 |
|   | C. Exterior Remodeling of Buildings .....                    | 10-5 |
|   | D. Additions and Expansions.....                             | 10-6 |
| <b>CHAPTER 19.11: ENFORCEMENT .....</b> | <b>11-1</b>  |      |
| 19.11.1.                                | Purpose.....   | 11-1 |
| 19.11.2.                                | Violations .....   | 11-1 |

# Table of Contents

---

|          |   |      |
|----------|---|------|
|          | A. Establish Use, Structure, or Sign Without Permit or Approval .....   | 11-1 |
|          | B. Development or Subdivision Without Permit or Approval .....  | 11-1 |
|          | C. Development, Subdivision, Use, or Sign Inconsistent With Permit .....  | 11-1 |
|          | D. Development, Subdivision, Use, or Sign Inconsistent With Conditions of Approval.....                                       | 11-1 |
|          | E. Development, Subdivision, or Sign Inconsistent With Development Code..   | 11-1 |
|          | F. Making Lots or Setbacks Nonconforming .....  | 11-1 |
|          | G. Increasing Intensity or Density of Use.....  | 11-1 |
|          | H. Removing or Defacing Required Notice .....   | 11-1 |
|          | I. Failure to Remove Signs.....   | 11-2 |
| 19.11.3. | Continuing Violations .....   | 11-2 |
| 19.11.4. | Responsible Persons .....   | 11-2 |
| 19.11.5. | Responsibility for Enforcement .....  | 11-2 |
|          | A. Director of Building and Safety .....  | 11-2 |
|          | B. Public Works Director.....   | 11-2 |
|          | C. Community Development Director.....  | 11-2 |
| 19.11.6. | Enforcement Procedures .....  | 11-2 |
|          | A. Non-Emergency Matters .....  | 11-2 |
|          | B. Emergency Matters.....   | 11-3 |
|          | C. Complaints Regarding Approved Conditional Use Permits, Temporary Use Permits, Variances, and Home Occupation Permits ..... | 11-3 |
|          | D. Revocation .....   | 11-3 |
| 19.11.7. | Remedies and Enforcement Powers .....   | 11-5 |
|          | A. Withhold Permit.....   | 11-5 |
|          | B. Permits Approved With Conditions.....  | 11-5 |
|          | C. Revoke Permits.....  | 11-5 |
|          | D. Stop Work.....   | 11-5 |
|          | E. Injunctive Relief .....  | 11-5 |
|          | F. Abatement .....  | 11-5 |
|          | G. Penalties.....   | 11-6 |
|          | H. Other Remedies.....  | 11-6 |

# Table of Contents

---

|   |   |             |
|---|---|-------------|
| I.  | Other Powers .....  | 11-6        |
| J.  | Continuation.....   | 11-6        |
| 19.11.8.  | Remedies Cumulative .....   | 11-6        |
| <b>CHAPTER 19.12: MEASUREMENT AND DEFINITIONS .....</b> |   | <b>12-1</b> |
| 19.12.1.  | Chapter Organization.....   | 12-1        |
| A.  | Section 19.12.2, Rules of Interpretation, establishes the rules related to word usage and the construction of language used in this Code.....                           | 12-1        |
| B.  | Section 19.12.3, Rules of Measurement, explains how distances are customarily measured, how numerical amounts are derived, and what encroachments may be permitted..... | 12-1        |
| C.  | Section 19.12.4, Defined Terms, includes the definitions for terms used in this Code.....   | 12-1        |
| 19.12.2.  | Rules of Interpretation .....   | 12-1        |
| A.  | Meanings and Intent .....   | 12-1        |
| B.  | Headings, Illustrations, and Text .....   | 12-1        |
| C.  | Lists and Examples .....  | 12-1        |
| D.  | Computation of Time .....   | 12-1        |
| E.  | References to Other Regulations, Publications, and Documents .....  | 12-1        |
| F.  | Delegation of Authority .....   | 12-1        |
| G.  | Technical and Non-Technical Terms .....   | 12-2        |
| H.  | Public Officials and Agencies .....   | 12-2        |
| I.  | Mandatory and Discretionary Terms.....  | 12-2        |
| J.  | Conjunctions .....  | 12-2        |
| K.  | Tenses and Plurals.....   | 12-2        |
| L.  | Commentary.....   | 12-2        |
| M.  | Term Not Defined.....   | 12-2        |
| 19.12.3.  | Rules of Measurement.....   | 12-2        |
| A.  | Density/Intensity .....   | 12-2        |
| B.  | Bulk .....  | 12-3        |
| C.  | Height .....  | 12-3        |
| D.  | Lot Characteristics .....   | 12-4        |

# Table of Contents

---

|                   |                    |              |
|-------------------|--------------------|--------------|
| E.                | Setbacks.....      | 12-6         |
| F.                | Encroachment ..... | 12-8         |
| 19.12.4.          | Defined Terms..... | 12-12        |
| <b>INDEX.....</b> |                    | <b>12-51</b> |